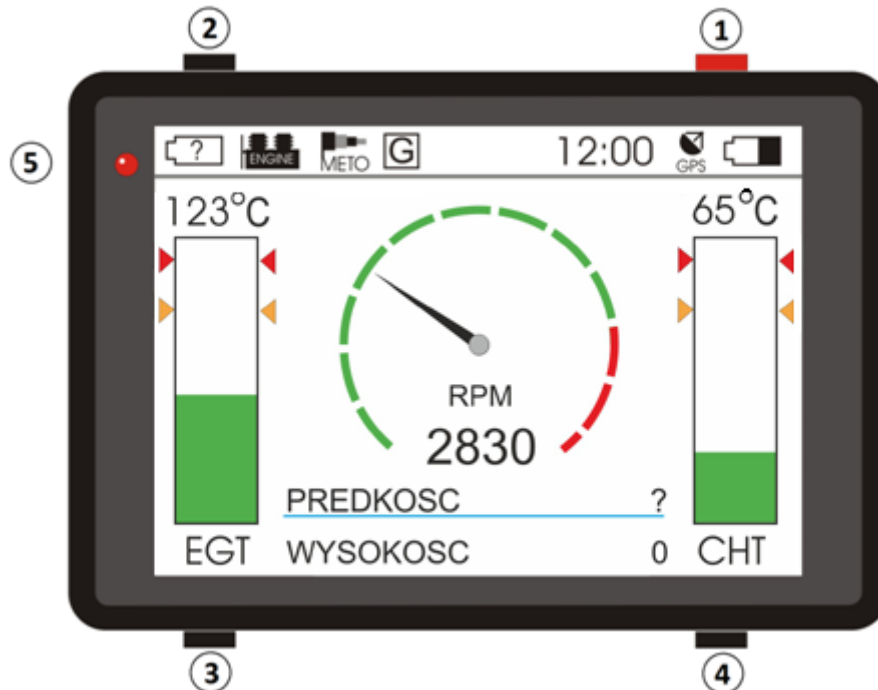


MotoMonitor

QUICK START

Basic device control information:



To start MotoMonitor receiver:

Press and hold button (1) until diode goes off (5)

To turn off MotoMonitor receiver:

At any of desktops, press and hold button (4) until you can feel vibration

When MotoMonitor is on :

Press long button 1 - to turn on device,

Press short button 1 – to go to another desktop,

Press short button 2 – to move back to previous desktop,

Press long button 2 - to set navigation point,

Press short button 3 - to start/stop stopper,

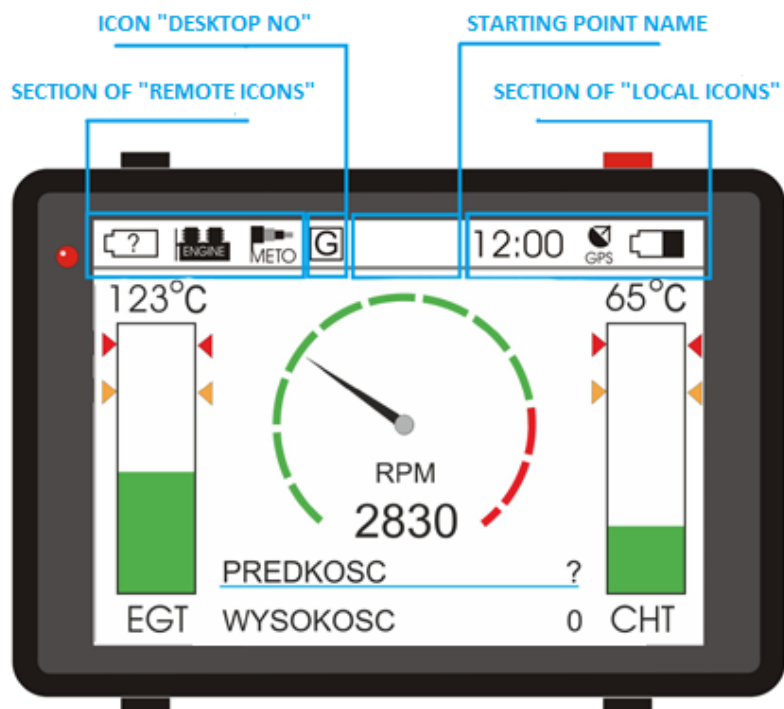
Press long button 3 - to reset stopper,

Press short button 4 – to refresh screen,

Press long button 4 - to turn off device (or exit from any menu),

Press and hold at the same time buttons 2 and 3 to go in to settings,

Description of screen- top bar



Section of „Remote icons“:

At this section presented are Function icons of devices which are wireless connected to MotoMonitor Receiver.

These icons are:



- Icon of battery charge level in MotoMonitor transmitter. When transmitter is not connected with receiver you can see question mark,



- Icon of transmitter connection. Icon is lighter grey when devices are not connected, if it's black it means connection is stable,



- MeteoStation connection icon. Icon is lighter grey when device is not receiving any data form station, if it changes to black and red it means Station is connected with receiver,

Section of „local icons“:

At this section we present function which are built in to receiver,

12:00 - Present time,



- GPS signal icon. When receiver is connected with GPS icon is black otherwise is grey,



- Battery charge level icon, shows current battery level in receiver,

Icon "desktop no":

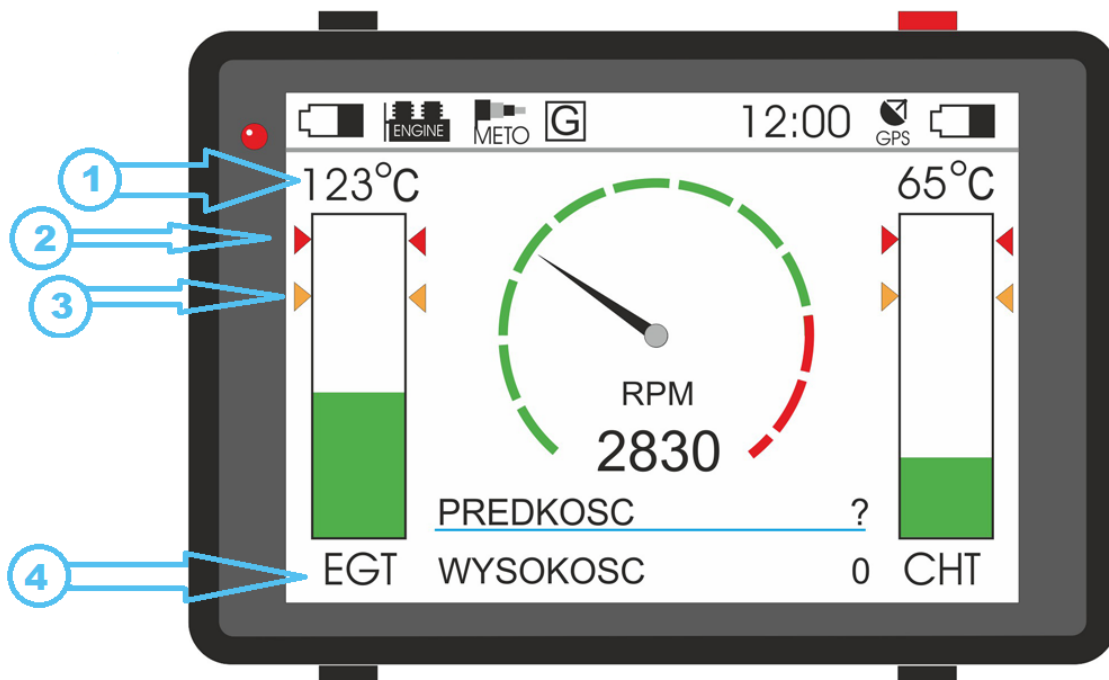
Icon shows at which one of 4 desktops we are at present time:

- G – currently we are on graphic desktop,
- 1 – currently we are on text desktop no 1,
- 2 - currently we are on text desktop no 2,
- 3 - currently we are on text desktop no 3,

Section "Starting point name":

When receiver gets GPS signal accurate with a place that we have given name before (look->settings), You will see define name on the top bar

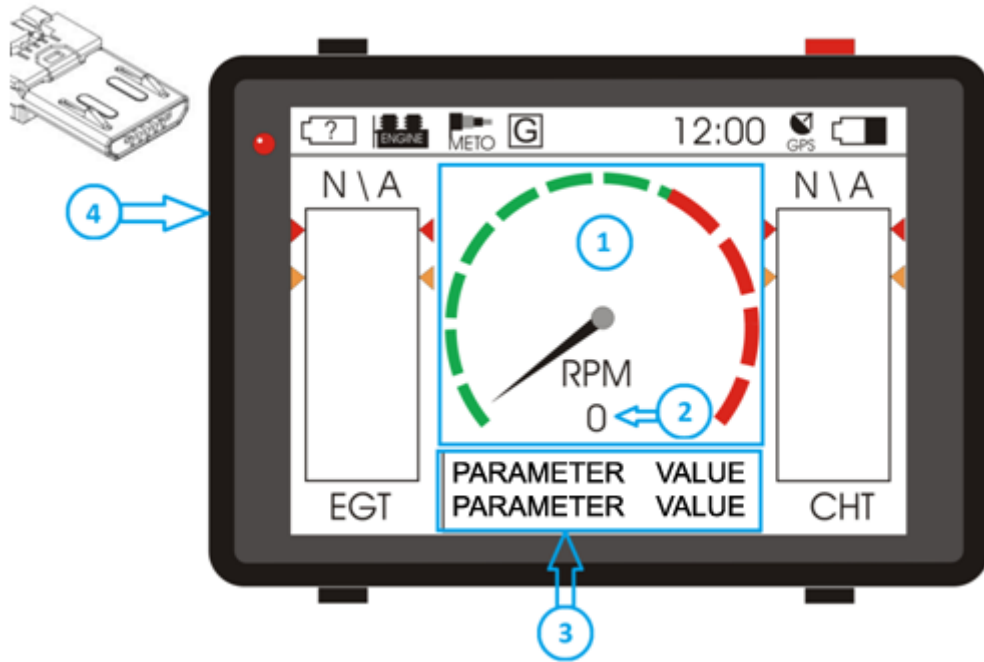
Description of graphic temperature icons:



- 1 – Figure value of temperature (in case of lack of connection with transmitter you will see message N\A - not available),
- 2 – Red triangle means alarm of temperature
- 3 – Orange triangle means optimal temperature,
- 4 – Name of temperature (T1/EGT/CHT),

The same interpretation for another chart of temperature

More about graphic desktop :




1 – graphic presentation of RPM,

2 – figure presentation of RPM,

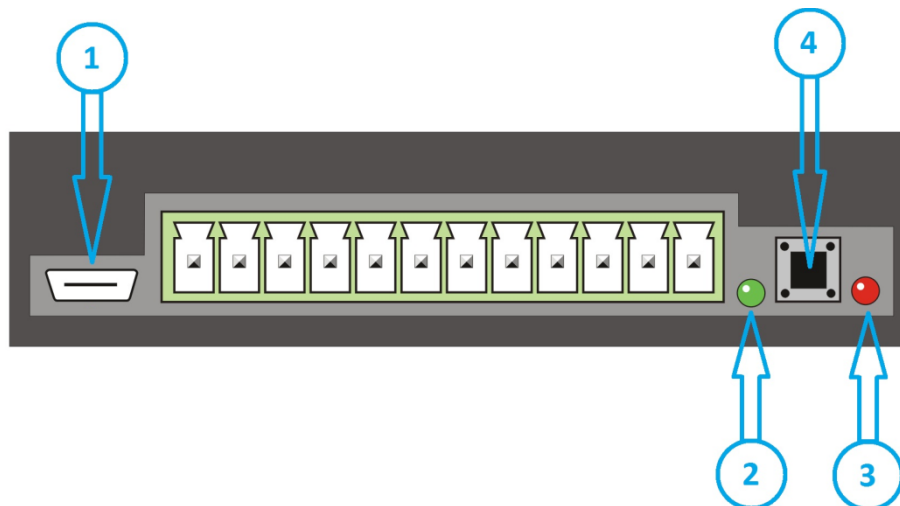
3 – Any two parameters of flight,

4 - micro-usb input (charging) WARNING !


Charger must be connected in the way shown above (USB icon  must be turned down)

WARNING ! be careful at first battery charging- tight USB input.

Description of transmitter:



1 - micro-usb input (charging) **WARNING !**

Charger must be connected in the way shown above (USB icon  must be turned down)

WARNING ! be careful at first battery charging- tight USB input.

2 – green diode,

3 – red diode,

4 – Button manual switch/ pairing button ,

Diodes behavior:

Red	Green	Information
Flashes	Turned off	Communication with receiver,
Doesn't matter	Flashes	Battery charging
Flashes in turns with green diode	Flashes in turns with red diode	Transmitter is pairing with receiver

Connection scheme: (1 input is the one besides USB),

No	Function
1	RPM input
2	Ground
3	Charger input +12/+24V
4	Optional LED output LED-
5	Optional LED output LED+/supply for Fuel sensor
6	Input for fuel sensor
7	Fuel sensor ground
8	Reserved input for additional features
9	T1 input (white)
10	T1 input (green)
11	T2sensor input (white)
12	T2 sensor input (green)

Notes:

Notes:

Notes: